

Product Information

Pressure Transmitter incl. Pressure Sensor GMUD



picture shows
GMUD for
relative
pressure

- For absolute pressure, over/under pressure and pressure difference
- Piezoresistive pressure sensor with integrated temperature compensation
- Suitable for regulating, measuring and monitoring

Characteristics

The GMUD is suited for regulating, measuring and monitoring tasks e.g. at climate and ventilation technology or environmental and medical technology

The pressure transmitter with integrated pressure sensor is appropriate for non-aggressive, non-oxidizing and non-reducing gases and liquids. The GMUD is not suitable for application in water

The GMUD measures absolute pressure (vacuum used as reference) for over pressure measurements over absolute zero or relative pressure (reference: atmosphere or ambient pressure) for over/under pressure measurements or measurements of difference pressure.

Technical data

Sensor element : piezoresistive pressure sensor with integrated temperature compensation (0..70 °C)

Measuring ranges

Relative pressure : 0..70 mbar rel.
0..2 bar rel.
0..10 bar rel.
Absolute pressure : 0..1100 mbar abs.
0..2 bar abs.
0..7 bar abs.
any range between upon request

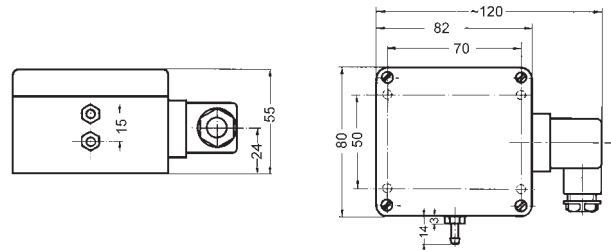
Overload and bursting pressure

Meas. range	70 mbar	1100 mbar	2 bar	7 bar / 10 bar
Overload	1.3 bar	2 bar	4 bar	10.34 bar

Sensors and Instrumentation

Accuracy (typ.)	: ±0.2 % FS (hysteresis and linearity) ±0.4 % FS (temperature effect 0..50 °C) if value ≤ 25 mbar : ±0.6 % FS (temperature effect 0..50 °C) double accuracy for meas. range > 25 mbar possible
Output signal	: 4..20 mA, 0..10 V
Power supply	: 12..30 V DC (for 4..20 mA) 19..30 V DC (for 0..10 V)
Permissible burden	: $R_A [\Omega] = (U_V [V] - 12 V) / 0.02 A$
Permissible load	: $R_L > 3000 \Omega$
Working temperature	: 0..70 °C
Pressure connection	: 1 (at abs.) or 2 (at rel.) metal connection pieces (nickel plated) for plastic tubes 6 x 4 mm (4mm inner diameter)
Electric connection	: elbow-type plug (EN 175301-803/A,) max. cross section: 1,5 mm², wire diameter from 4.5..7.0 mm
Housing	: ABS
Protection class	: IP65

Dimensions



Ordering code

1. 2. 3.
GMUD - - -

1. Type of pressure measurement and measuring range		
MR0	0..25 mbar rel.	precision/relative pressure
MR1	0..70 mbar rel.	relative pressure
MR2	0..2 bar rel.	relative pressure
MR3	0..10 bar rel.	relative pressure
MA1	0..1100 mbar abs.	absolute pressure
MA2	0..2 bar abs.	absolute pressure
MA3	0..7 bar abs.	absolute pressure
Mx1	other measuring range within 0..25 mbar rel. precision/relative pressure (please state desired measuring range separately)	
Mx2	other measuring range in range > 25 mbar rel. (please state desired measuring range separately)	
2. Output signal		
A1	4..20 mA	
V2	0..10 V	
3. Options		
00	without option	
LACK	board varnished on both sides (for outdoor usage)	
DSG	double sensor accuracy (not possible in measuring range ≤ 25 mbar)	
VO	on-site display (display + operating buttons)	

Ordering example:
GMUD-MR1-A1-LACK-VO